

L10 System

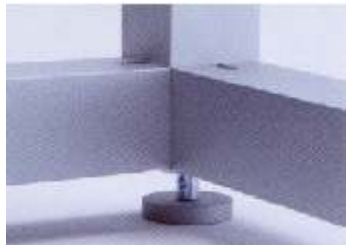
Leitner





The large-scale system.

For exhibitors out to display products, facilitate communication and present their company to best effect, the timeless qualities of Leitner_10 make it the ideal system. Assembled simply and rapidly with virtually no tools at all, Leitner_10 creates an immediate impression of spacious architecture - with self-supporting sections spanning up to 6 metres and standing up to 5 metres high. The two-storey version of Leitner_10 can span widths of 5 m and reach a height of 6.4 m.



System elements designed for a perfect fit. The square profile columns are joined to the beams by means of the aluminium connectors.

Ceiling supports and columns in natural anodised aluminium - high quality combined with low weight. Strong aluminium connectors make for high stability.







High-level discussions.



Staircase based on beams from the double-decker Leitner_10 system.



Steps in natural anodised aluminium with a grooved and cross-milled profile.

Today more than ever it is complete solutions that fit the bill; solutions designed for flexibility and economy. Leitner_10, for example, allows you to add a second floor, creating a double-decker stand. To connect levels one and two there is a selection of different layouts, plus staircases of various widths with steps in hardwood or anodised aluminium.



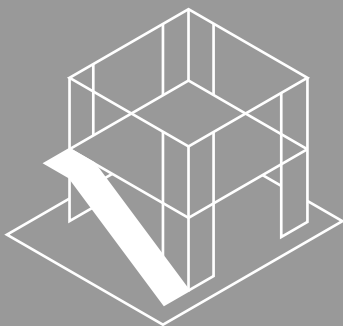
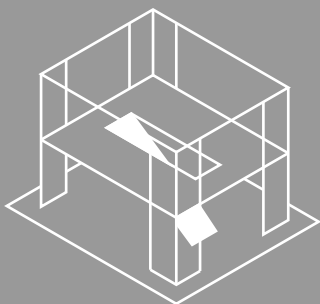
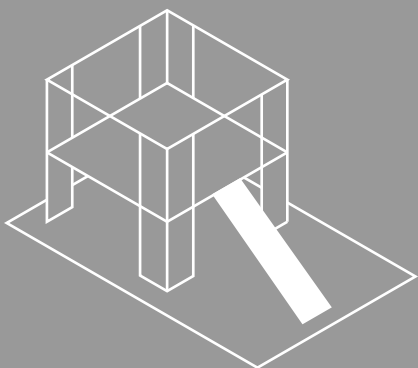
Staircases.

The care applied to the design of the Leitner_10 exhibition system goes all the way down to the finest detail. Both functional and attractive, the various stairways linking the two floors can be adapted to the specified stand dimensions. They also underpin the architectural appeal of the stand and clear the way for communication at different levels.



Strength and stability for the Leitner_10 staircase: steel supports between the stringers and the ceiling supports

Leitner

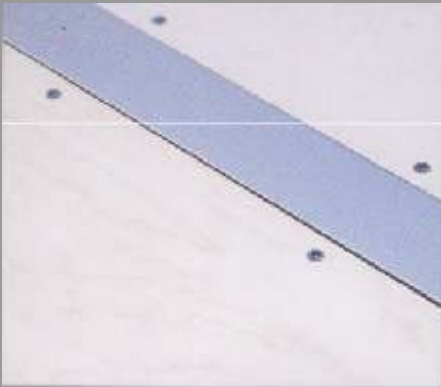




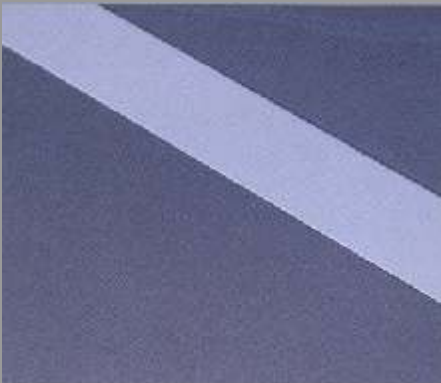


Platforms and floors.

Your chosen exhibition system must, of course, match your corporate identity, aligning neatly with your corporate design specifications. Perfectly matching colours and materials communicate the desired overall impression. For the platforms and floors a wealth of design options are available: multi-ply panels bolted to the platform frame provide the base material which can then be covered with linoleum, parquet flooring or carpeting.



Base panels in multi-ply beech or birch.



Linoleum is laid on the base panels.



Alternatively, the base panels can be fitted with carpeting.

Ceilings.

Durability, visual appeal, strength and stability determine the materials used here. The ceiling supports, for example, are made of aluminium. Openings for cable and service ducts and for a sprinkler system are provided for. The suspension profiles bolted to the beams support the ceiling elements. The use of different materials makes for attractive contrasts and changing settings.



Cross bracing ensures stability and safety.



The flooring elements are bolted to the support brackets.



Ceiling supports with openings for cable and service ducts.



The ceiling elements are slotted into the suspension profiles.

Panes and Panels.

Leitner_10 is based on a simple matrix. That makes planning your stand far easier, no matter how large and elaborate it may be. With Leitner's easy-to-handle assembly techniques, you can soon set yourself apart from the crowd in original style. Different wall panels are easily fitted. Written displays and multimedia applications can be readily integrated. Glass panels provide both security and transparency, while laminated or textile covered panels make for privacy.





Horizontal or vertical blinds provide variable degrees of privacy.



Glass or laminated panels add openness or seclusion.

Ceilings and lighting.

Ceilings define our impressions of rooms. Leitner_10 offers clearly structured ceilings with elements made up of aluminium slats or closed ceilings using laminated panels. Alternative distinctive ceiling designs feature sandwich elements in polycarbonate. Lighting forms a important part of the room and of your presentation, as such it calls for careful, mission-matched planning. To help create the desired impact, an extensive range of lighting systems are at your disposal.





*Leitner_10 perspectives: light
corridors, bright rooms*

A room in a room.

Thanks to its logical design, Leitner_10 allows you to create rooms of the widest variety of sizes - for meetings, conferences or presentations; for workplaces, cafeterias or relaxation zones; for halls, anterooms or corridors. Leitner_10 offers optimum durability and stability, plus a wide range of accessories for a whole spectrum of different areas.



Leitner



The perfect setting.

All exhibitors appreciate exhibition systems that give them maximum latitude when designing their stand; systems that won't cramp their style, that are expandable, economical, and can be used again and again. Such systems have to respond not only to the technical necessities imposed by trade fair settings but also to future developments in the field. Leitner_10 is discretion itself, content to set the stage for your products and marketing message, providing the perfect setting for a presentation that will make a lasting impression.



Systems overview



10 013 00

Vertical leveller



10 014 00

Intermediate vertical leveller



10 015 05

Support plate for upright



10 015 06

Base plate for upright



10 100 00

Upright



10 110 00

Support



10 110 40

*Ceiling support,
double-decker*



10 113 00

Mounting core for beam



10 130 00

Connector core for upright



10 130 01

Connector for ceiling support



10 153 05

Seating bracket for floor panel

We would be delighted to send you an overview of our complete range of exhibition systems.

Phone +44 (0)1604 230445

Fax +44 (0)1604 231389

www.exhibitions-displays-interiors.co.uk



10 885 05

Connector element for floor panel



10 700 00

Wire rope socket



10 701 00

Wire rope for wind bracing



10 551 00

Suspension profile for ceiling element

Leitner

Leitner GB Ltd

4 Monkspond Street,

Northampton. Nn1 2LF

Phone +44 (0)1604 230445

Fax +44 (0)1604 231389

www.exhibitions-displays-interiors.co.uk

www.leitner.co.uk